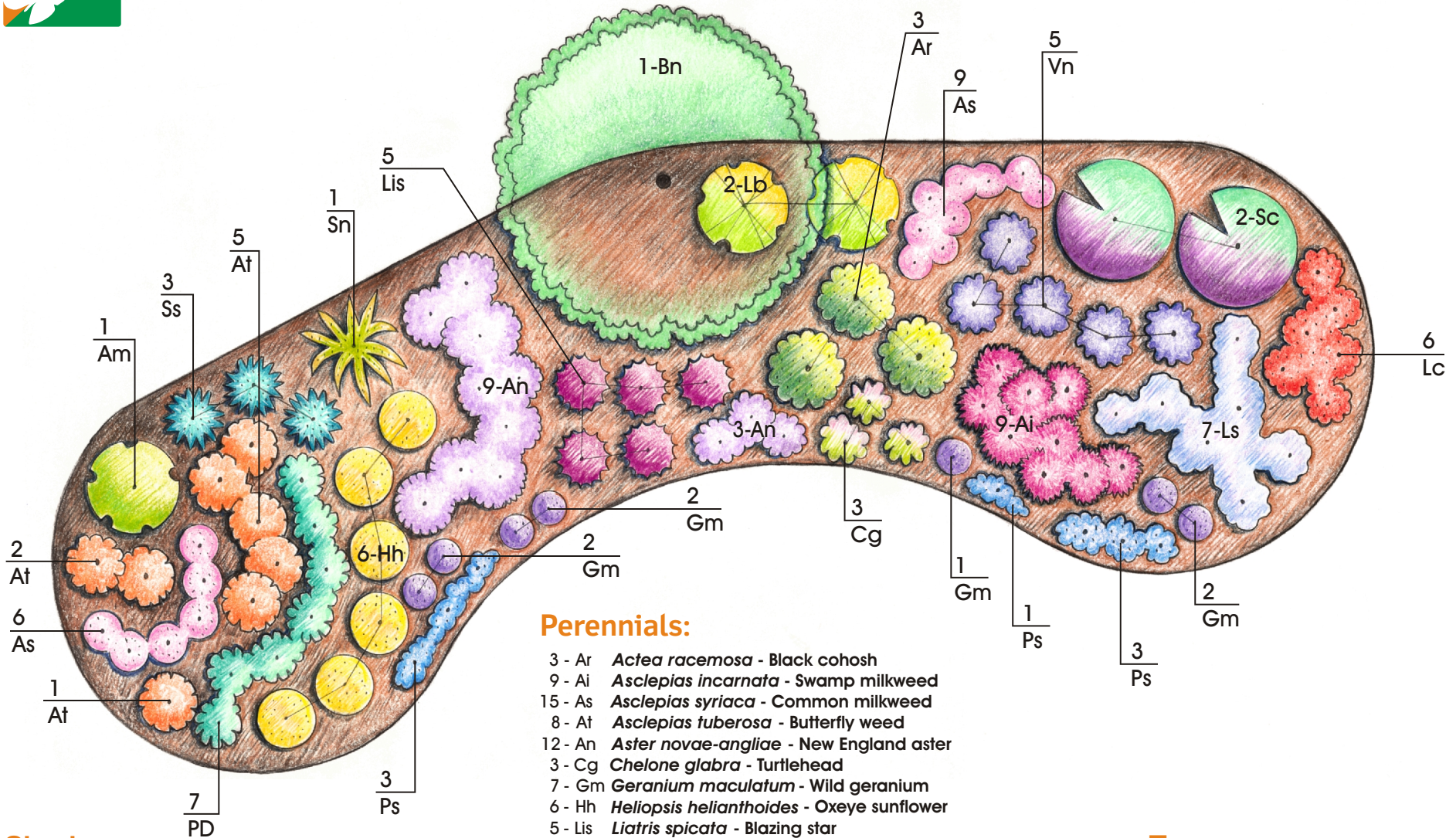




Butterfly & Hummingbird Garden



Shrubs:

- 1 - Am *Aronia melanocarpa* - Black chokeberry
- 2 - Lb *Lindera benzoin* - Spicebush
- 2 - Sc *Sambucus canadensis* - Elderberry

Perennials:

- 3 - Ar *Actea racemosa* - Black cohosh
- 9 - Ai *Asclepias incarnata* - Swamp milkweed
- 15 - As *Asclepias syriaca* - Common milkweed
- 8 - At *Asclepias tuberosa* - Butterfly weed
- 12 - An *Aster novae-angliae* - New England aster
- 3 - Cg *Chelone glabra* - Turtlehead
- 7 - Gm *Geranium maculatum* - Wild geranium
- 6 - Hh *Heliopsis helianthoides* - Oxeye sunflower
- 5 - Lis *Liatris spicata* - Blazing star
- 6 - Lc *Lobelia cardinalis* - Cardinal flower
- 7 - Ls *Lobelia siphilitica* - Great blue lobelia
- 7 - Pd *Penstemon digitalis* - Beard-tongue
- 7 - Ps *Phlox stolonifera* - Creeping phlox
- 3 - Ss *Schizachyrium scoparium* - Little bluestem
- 1 - SN *Sorghastrum nutans* - Indian grass
- 5 - Vn *Vernonia noveboracensis* - New York ironweed

Trees:

- 1 - Bn *Betula nigra* - River birch
(multi-stemmed trunk preferred)

Modifications to the plan might be needed or desired based on space limitations, proximity to buildings or other factors.

Scale 5/16" = 1'-0

You can find this and other native garden templates at www.iConservePA.org