

The Role of Trustee

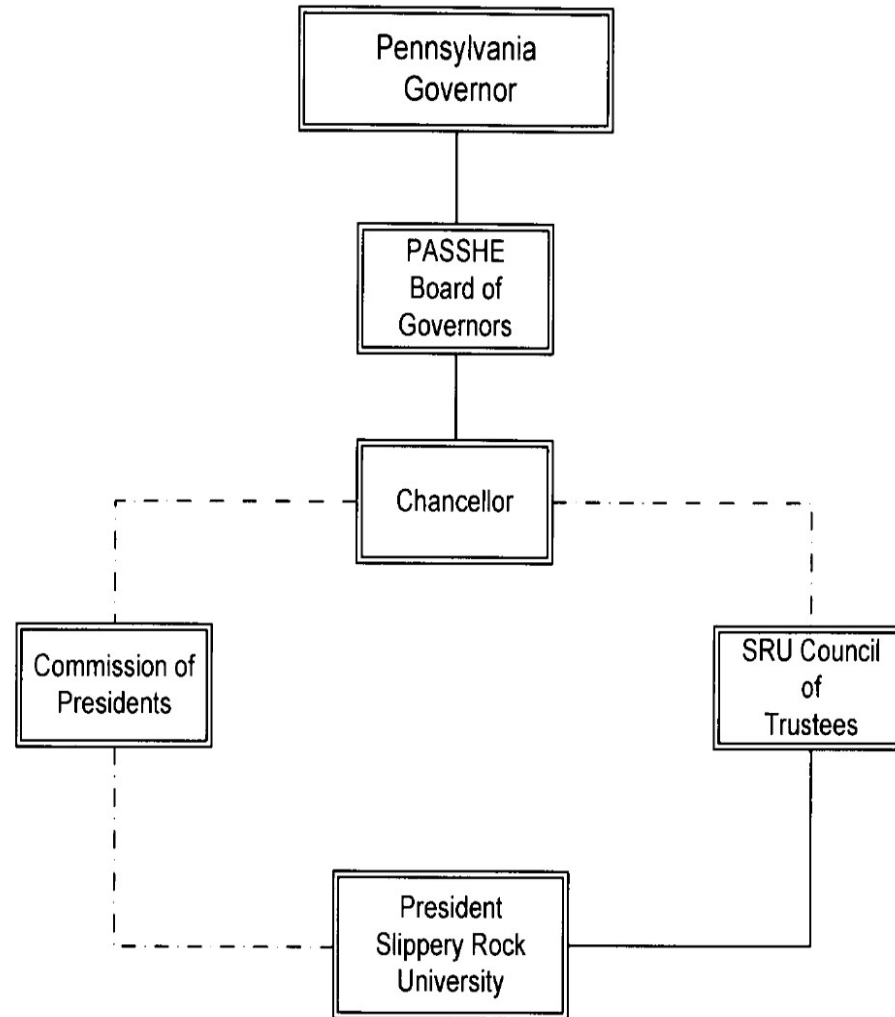
Pennsylvania State System of Higher Education

Seeking student trustee candidates at Slippery Rock University

Overview of the Pennsylvania's State System of Higher Education

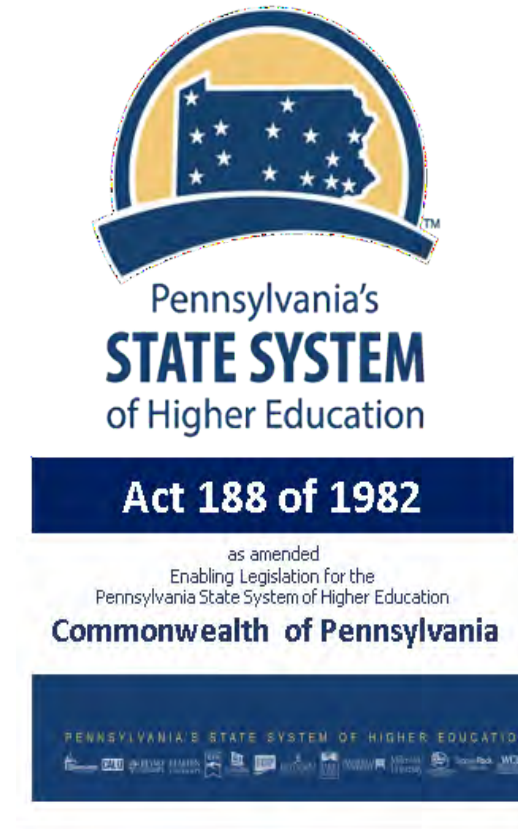
- ▶ Pennsylvania's State System of Higher Education is comprised of the following universities: PennWest [California, Clarion, and Edinboro] Commonwealth University of PA [Bloomsburg, Lock Haven and Mansfield], Cheyney, East Stroudsburg, Indiana, Kutztown, Millersville, Shippensburg, Slippery Rock and West Chester Universities
- ▶ The Office of the Chancellor is located in Harrisburg, PA.

Governance Structure



Act 188

- ▶ Enabling legislation for the Pennsylvania State System of Higher Education
 - ▶ Mission - As established by the founding legislation, Act 188 of 1982, the primary mission of the State System”...is the provision of instruction for undergraduate and graduate students to and beyond the master’s degree in the liberal arts and sciences, and in the applied fields, including the teaching profession.” While the universities share a common mission, each also embraces specific missions in business, human services, public administration and/or technology. Additionally, the purpose of the System”...shall be to provide high quality education at the lowest possible cost to students.”
- ▶ Details the powers and duties of the Council of Trustees



Board of Governors

- ▶ A 20-member Board of Governors is responsible for planning and coordinating development and operation of Pennsylvania's State System of Higher Education;
- ▶ Establishes broad educational, fiscal and personnel policies and oversees the efficient management of the State System;
- ▶ Appoints the Chancellor and University Presidents;
- ▶ Approves new academic programs, sets tuition and coordinates and approves the annual State System operating budget

Board of Governors

- ▶ Eleven board members are appointed to four-year terms by the Governor of Pennsylvania
- ▶ Five trustees representing the fourteen universities serve on the Board of Governors (elected by the PACT membership)

PACT

- ▶ The Pennsylvania Association of Council of Trustees is the collective membership of the Council of Trustees from the 14 institutions.
- ▶ Its primary purpose is to:
 - ▶ educate trustees on national trends in higher education;
 - ▶ apprise trustees of issues facing the State System;
 - ▶ establish a network of trustees to communicate with the Chancellor and Board of Governors; and
 - ▶ provide trustees professional development opportunities
 - ▶ Two conferences held annually (spring, fall) in Harrisburg @ Dixon Center



The Role of Trustee

- ▶ The Council of Trustees at each of the 14 institutions consist of 11 members, nominated and appointed by the Governor with the consent of the Senate
- ▶ At least 2 members shall be alumni of the institution
- ▶ Trustees are appointed and shall serve terms of 6 years
- ▶ Student Trustees serve until graduation

The Role of Trustee

- ▶ Trustees are responsible for the appointment and evaluation of the University President;
- ▶ To review and approve the recommendations of the president as to the standards for the admission, discipline, and expulsion of students;
- ▶ To review and approve the recommendations of the president pertaining to operating and capital budget requirements for forwarding to the Board of Governors;

The Role of Student Trustee

- ▶ The student trustee is appointed by the Governor following an interview process at the University level and approved through the Chancellor's Office
- ▶ Candidates must be:
 - ▶ A full-time undergraduate student in good academic standing at the sophomore or above level;
 - ▶ Enrolled for at least 12 semester hours at the institution which he/she is a trustee;

The Role of Student Trustee

- ▶ The Student trustee understands the role is an honor, a privilege and a significant responsibility, and
 - ▶ Is in partnership and in support of the University President and the Administration;
 - ▶ Is engaged in the SRU community and brings an understanding and knowledge about the student body;
 - ▶ Is curious to listen, to learn, to think critically and objectively, and to ask questions

The Role of Trustee

- ▶ The Council of Trustees meets quarterly on campus - March, June, September, and December
- ▶ Meetings commence over two days
 - ▶ Committee meetings represent the divisions of the institutional structure:
 - ▶ Academic and Student Affairs
 - ▶ Finance and Administrative Affairs
 - ▶ University Advancement
 - ▶ Business Meeting
 - ▶ Faculty/Student Showcase
 - ▶ Public review of Action and Information University business

The Role of Trustee

▶ Preparation:

- ▶ Learns about the university's history, mission, goals and distinctive features;
- ▶ Understands and supports the university's values, vision and strategic directions;
- ▶ Understands the nature, structure and mission of the State System and the roles of the Board of Governors, the Office of the Chancellor, the Council of Trustees and the PACT Executive Board

The Role of Trustee

Expectations:

- ▶ Studies background materials provided before trustee meetings
- ▶ Comes to meetings prepared to ask questions and consider agenda items
- ▶ Is an agent of the University, the System and the Commonwealth, and conducts himself/herself in a professional and appropriate manner
- ▶ Is present at University events, (Convocation, Commencement, etc.)

Questions

